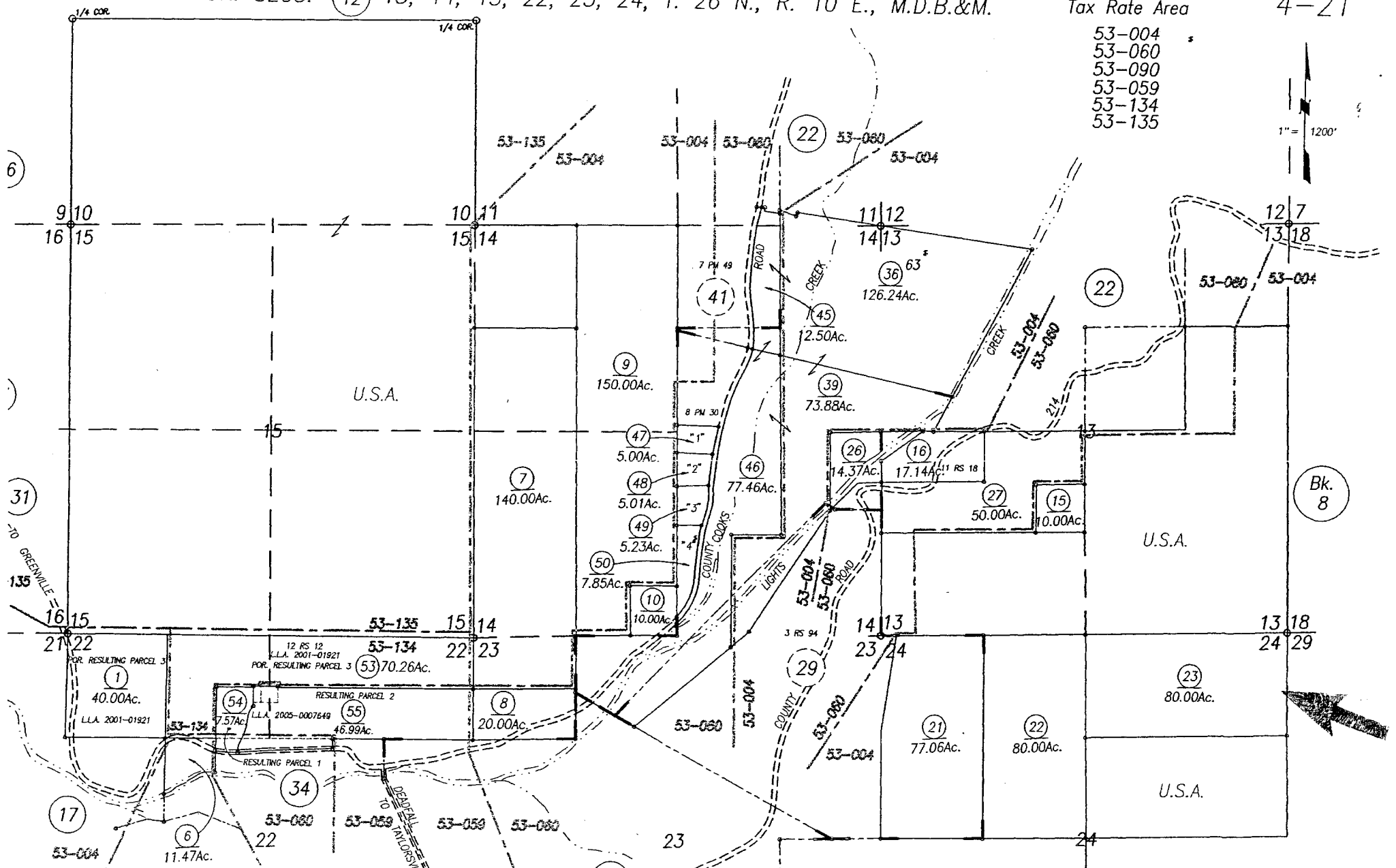


- 53-004
- 53-060
- 53-090
- 53-059
- 53-134
- 53-135



"IMPORTANT: THIS PLAT IS NOT A SURVEY. IT IS MERELY FURNISHED AS A CONVENIENCE TO LOCATE THE LAND IN RELATION TO ADJOINING STREETS AND OTHER LANDS AND NOT TO GUARANTEE ANY DIMENSIONS, DISTANCES, BEARINGS OR ACREAGE."

Assessor's Plats are for general property location and tax purposes. They may not be used as a basis for legal property descriptions.

Assessor's Parcel Numbers Shown in Circles.
Assessor's Block Numbers Shown in Ellipses.

Book 4, Page 21
Plumas County Assessor's Map
2001

BY WITHROW